

D-SUB S 09P STR FE THR UNC PL2 GP SA

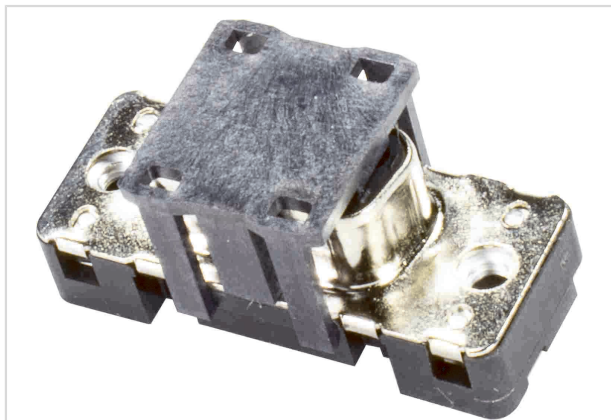


Image is for illustration purposes only. Please refer to product description.

Part number	09 66 175 6582 333
Specification	D-SUB S 09P STR FE THR UNC PL2 GP SA
HARTING eCatalogue	https://b2b.harting.com/09661756582333

Identification

Category	Connectors
Series	D-Sub
Identification	Standard
Element	Connector
Description of the contact	Stamped Straight

Version

Termination method	Reflow soldering termination (THR)
Gender	Female
Size	D-Sub 1
Connection type	Motherboard to daughtercard Mezzanine
Number of contacts	9
further contacts	With grounding pin
Termination length	2.1 mm
Locking type	Fixing flange with thread 4-40 UNC
Pack contents	Sample

Technical characteristics

Distance between rows	2.84 mm
Contact spacing (termination side)	2.74 mm
Rated current	8 A
Rated current	@ 40 °C



Pushing Performance
Since 1945

Technical characteristics

Clearance distance	≥1 mm
Creepage distance	≥1 mm
Insulation resistance	>10 ¹⁰ Ω
Contact resistance	≤10 mΩ
Tightening torque	≤0.6 Nm Female screw lock
Limiting temperature	-55 ... +125 °C
Insertion force	≤30 N
Withdrawal force	≥3.3 N ≤20 N
Performance level	2 acc. to CECC 75301-802
Mating cycles	≥250
Test voltage U _{r.m.s.}	1 kV
Isolation group	I (600 ≤ CTI)
PCB thickness	≥1.6 mm
Installation height	6.2 mm
Hot plugging	No
Moisture Sensitivity Level (MSL)	1 acc. to ECA/IPC/JEDEC J-STD-020D
Process Sensitivity Level (PSL)	R0 acc. to ECA/IPC/JEDEC J-STD-020D

Material properties

Material (insert)	Thermoplastic resin, glass-fibre filled (PPA) Shell: steel, nickel plated
Colour (insert)	Black
Material (contacts)	Copper alloy
Surface (contacts)	Noble metal over Ni
Material flammability class acc. to UL 94	V-0

Specifications and approvals

Specifications	DIN 41652 CECC 75301-802
----------------	-----------------------------

Commercial data

Packaging size	1
Net weight	7 g



Pushing Performance
Since 1945

Commercial data

Country of origin	Romania
European customs tariff number	85366990
GTIN	5713140218086
eCl@ss	27440214 D-Sub coupler